

Technical Needs
Compagnie Nulle Part
ZIP ZAP
Updated September 2008

Stage management :

The lights management and the sound management should be installed side by side, in the central axis of the stage, in or behind the audience. Sound management on public left, light management on public right.

Prepare the route of an Ethernet cable (75 meters long, video signal) from the stage management to the the video projector on stage.

TO BE SUPPLY BY THE ORGANIZER :

Stage: totally flat

Opening width : 10m

Wall-to-wall width : 14 m

Depth : 11m

Height : 7m

4 plans of black legs in an Italian way

Black ground (better)

3 black border on top

1 black tab in the background of the stage

Lights :

1 console with memories Presto, Pronto

Public lightning graduated from the stage management

25 Par 64

31 PC 1000

2 profiles **613 SX** Juliat

4 profiles 614 Juliat

8 plates for lights

2 feet for lights

Gels : Lee : 8x147, 8x136, 5x200, 5x152, 18x201, 10x206, 2x205, and Rosco :15x119R, 10x114R

=> See plans below

Sound:

1 console 12 inputs, 3 aux, Subs master

1 sound system sized for the hall.

4 loud speakers type Nexo PS15 , C.Heil MTD 115...

2 active DI

2 CD player with auto pause

1 intercom (stage management) <==> (stage, behind the screen)

=> See plans below

Dressing room :

1 dressing room for 3 jugglers, with shower, towels, tables, mirrors, mineral water, orange juice, tea, coffee.

Compagnie staff :

3 jugglers, 1 administrator and 2 technical managers.

Organizer staff needed :

1 lights manager, 1 electric manager, 1 sound manager.

Setting up the show needs 3 periods of 4 hours :

1st period : decors and accessories set up, start lights adjustment

2nd period : end lights adjustment, lights patching

3rd period : show and dismantling

Important precision :

Prepare 3 quartz 300 or other projector (load) on the circuits 38, 39, 42

Prepare extra cable extensions and multiple plugs for the devices of the Compagnie.

SUPPLIED BY THE COMPAGNIE :

1 video projector 4500 lumens

MIDI keyboard

2 computers

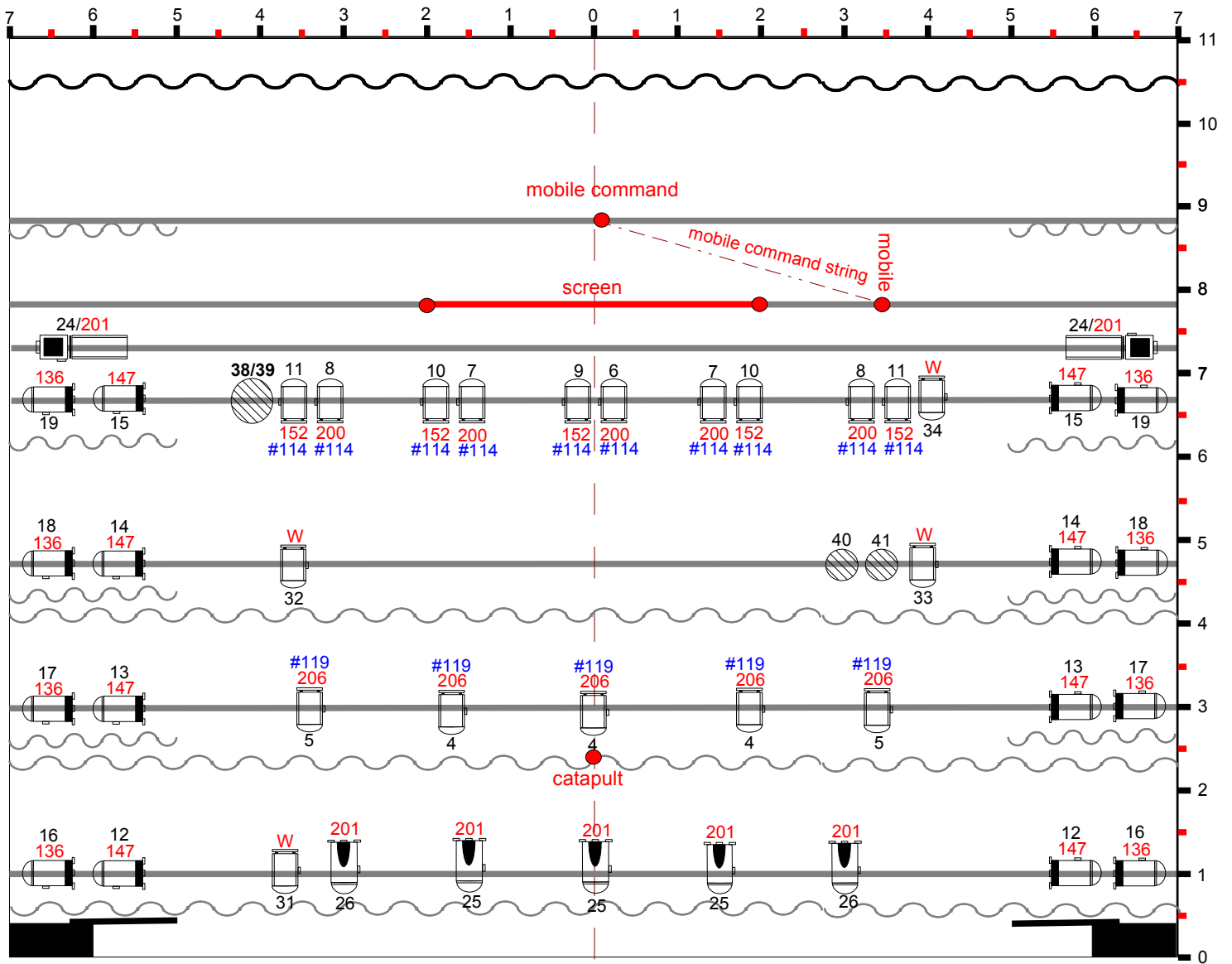
MIDI interface, MIDI booster, MIDI sensor

75m Ethernet cable

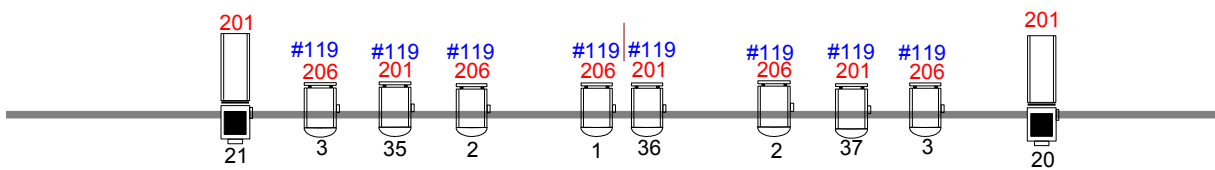
THE LIGHTS SHOULD BE SET UP WITH GELS AND PATCHED **BEFORE OUR ARRIVAL.**

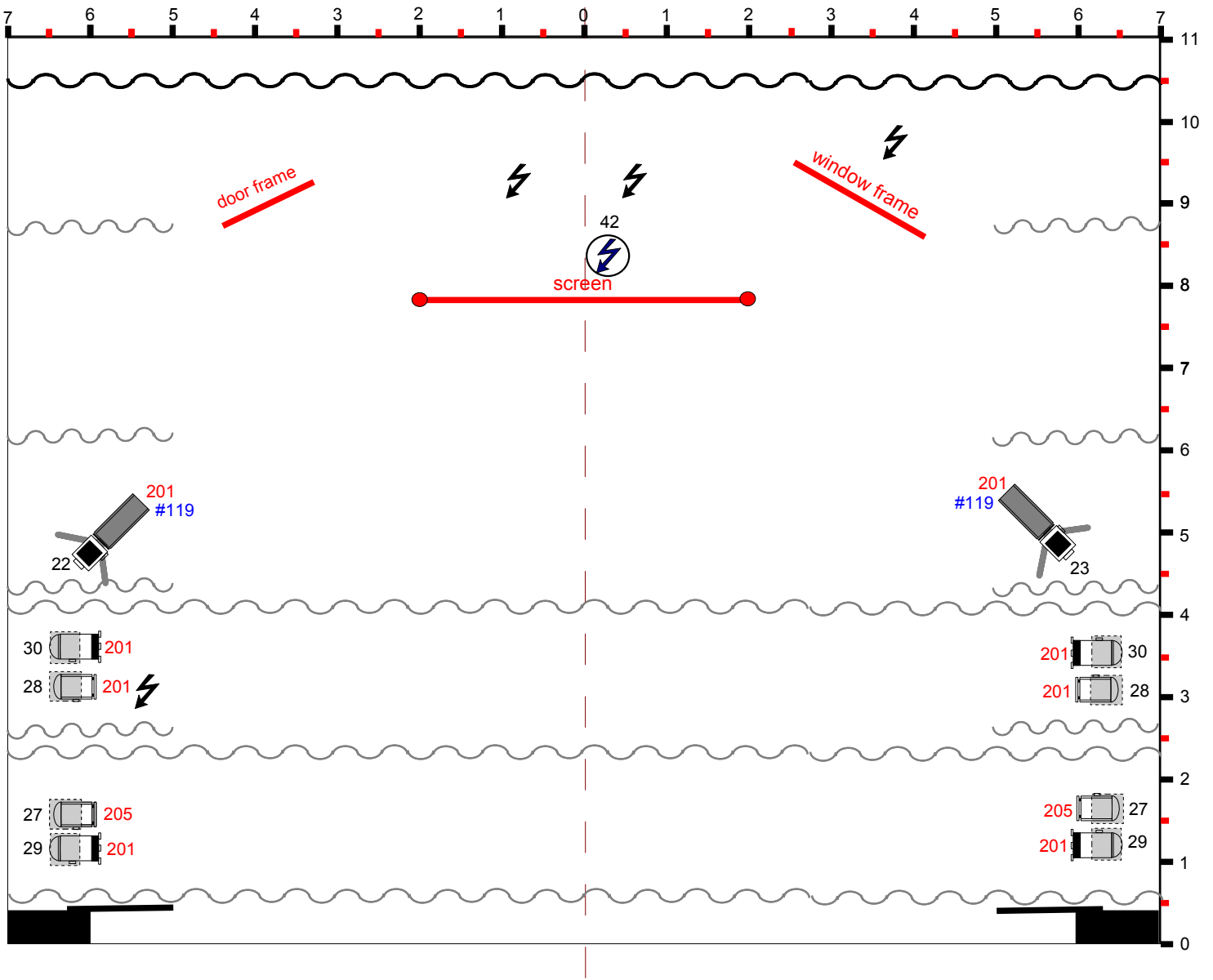
TECHNICAL CONTACT :

Romain VOISINNE : r.voisinne@gmail.com



Cie nulle part / Zip Zap
Poles lights plan

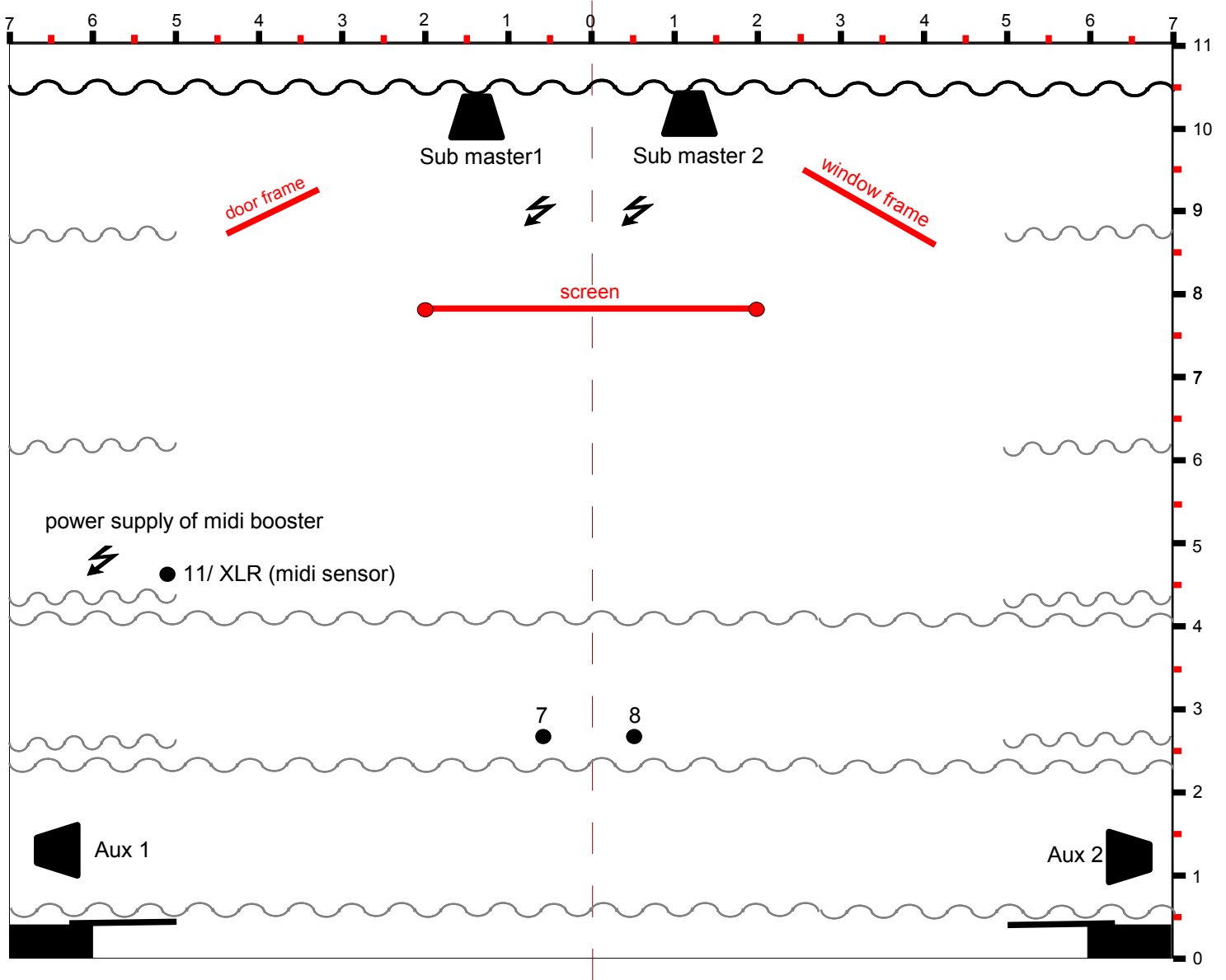




Cie nulle part / Zip Zap
Ground lights plan

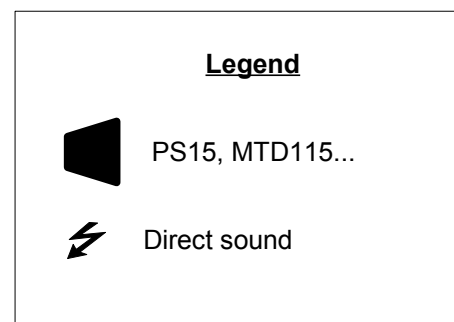
Legend

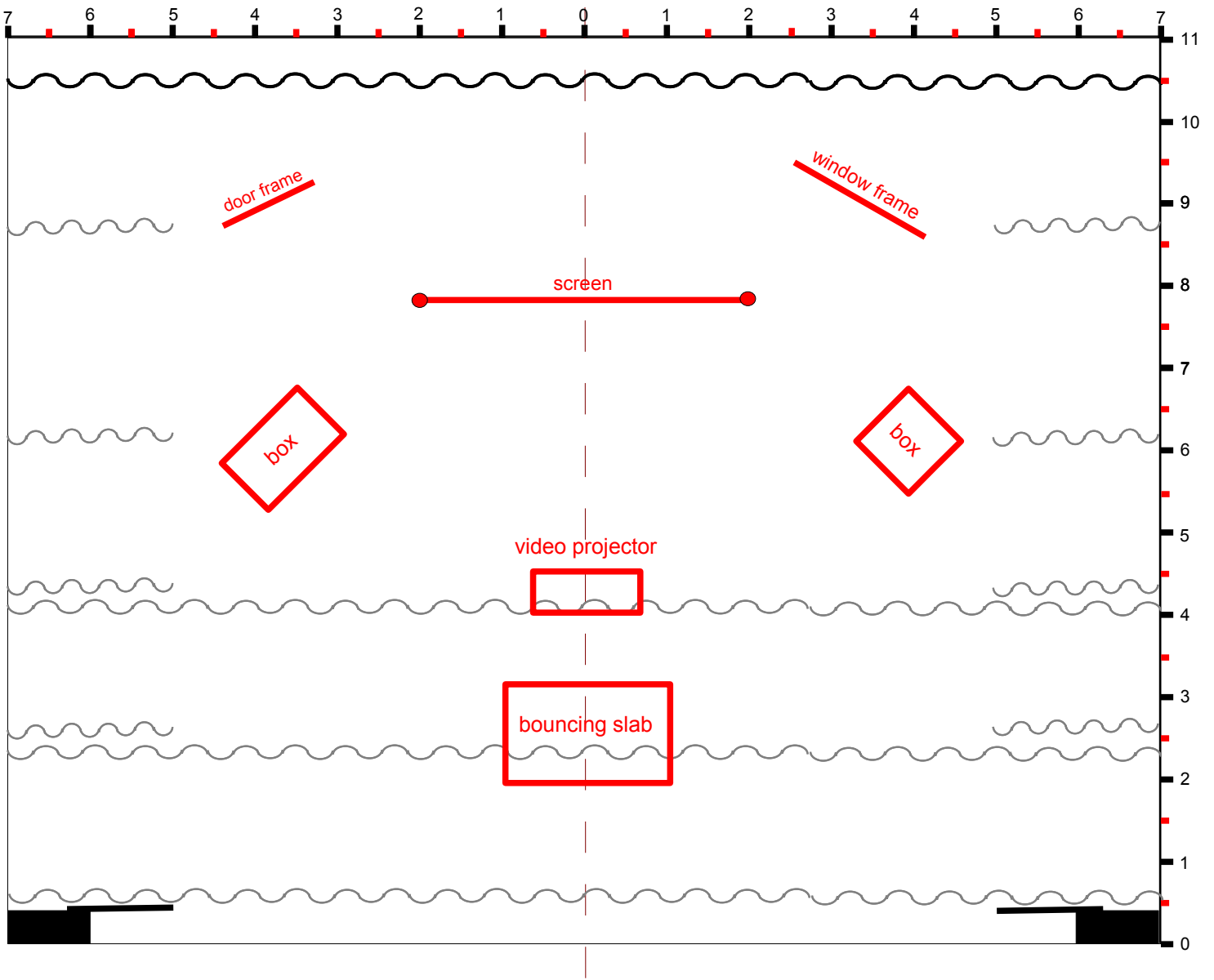
Profile 614	Profile 613SX/pied	Pc 1000/ platine	Direct line
Pc 1KW	Par CP62/plates	Lamp (own supplied) 2 X 100W	Graduated line
Par CP61	PAR CP62	PAR56 (own supplied)	Hanging up points Less than 15KG
			XX Light circuit #
			XX Light filter Lee #
			#X Light diffuser Rosco #



Cie nulle part / zip zap
Sound

Input	Source	Remark
1	CD1/L	Auto pause
2	CD1/R	
3	CD2/L	Auto pause
4	CD2/R	
5	CPU1/L	
6	CPU1/R	
7	active DI	
8	active DI	
9	CPU2/L	
10	CPU2/R	
11	XLR (MIDI booster)	Line to CPU2 MIDI card
Output	Source	
Aux1	Monitor L	Post
Aux2	Monitor R	Post
Aux3	CPU2	Pre
Sub master1/2	Background sound	Subs independent from Master





Cie nulle part / zip zap
Stage plan